



Word of Life

The Rodgers in South Korea



The Support Raising Trail

In January we took our first trip as a family of five. We reconnected with friends, shared about our ministry, and updated our home church.

Elsbeth helped to facilitate a weekly Bible Study for mom's. The mom's meet where the kids can play while the moms study. We continue helping with Awana. A student asked whether family members who commit suicide go to hell. Jeremy had the privilege of addressing the issue the following week, with a whole lesson devoted to the topic. We are also attending a couples' Bible Study whenever we are in town.

Elsbeth's grandma Jan and aunt Mary got to meet Estelle for the first time.

The Grenade's are missionaries to Mauritius, off the coast of Africa. We have closely followed each other's missionary journeys and so it was a pleasure to see them while they are on furlough. It was an encouraging time and they gave some excellent advice for this stage of support raising.

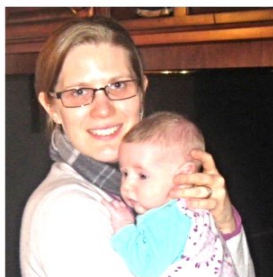
Within the last year the Walkers have adjusted to a change of cities, jobs, and got married! They longed for deeper relationships at their new church so they started a small group. They found a way to support the church and serve others, while acting on their vision of a family ministry. They have been a great example of faith and vision.

We have relocated to Jeremy's parent's place to follow up with friends, family, and churches in the south. We hope to strengthen our bond with current supporters and expand our team in the area. If you know anyone in Mississippi, let us know! Our prayer is that we can see our monthly support commitments increase by 10% of our overall need each month until we are at 100%. That would be about \$570 per month (or 6 people at \$20 per mo., 5 people at \$50 per mo., and 2 people at \$100 per mo.)

Where will we go next? One of the greatest things about this stage in our journey is that we decide where to go. We set our schedule. So if you'd like us to visit, or meet some friends, family, or a church that may be interested in partnering with us, please let us know!



Please join us in praying for a 10% addition to our support commitment amounts per month. At that rate, we could be at 100% by June 2016! We are currently at about 50%.



Fellowship with missionary friends, the Grenade family. Elsbeth used to work with Becky while Pascal and Jeremy went to the same Seminary.

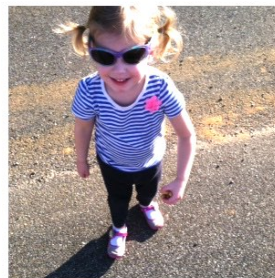
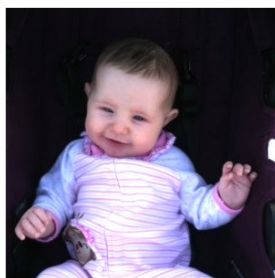
Elsbeth's Grandma Jan and Aunt Mary got to meet baby Estelle for the first time. Grandma Jan is a retired camp missionary.



In Louisville, it was fun to reconnect with friends and neighbors. The Vaughan family has been friends of WOL Korea for years. Check out Rudy's podcasts on wordoutreach.org



Jeremy used to work with Sherita when she and Layton were just dating. Please pray for the Walkers as they invest in the lives of their church even as they partner with us in missions.



The kids are loving time with Mimi and Pop Pop down South, along with the wonderfully warm weather. Estelle did great on her two month checkup and was almost off the charts with her development. Praise God!

5406 Leone Drive, Indianapolis, IN 46226
Email us at: jeremyrodgers@wol.org

To GIVE visit: jeremyrodgers.wol.org
Follow us on our Blog: RodgersInAsia.com